

IMAGE EXCLUSIVE TRIP IN PHETCHABURI

TRAVEL DATE CAN BE ARRANGED AT YOUR CONVENIENCE

IMAGE HOLIDAY (THAILAND) CO.,LTD
193/152 12th Fl., Lake Ratjada Tower, Ratjadapisek Rd., Klongtoey
Bangkok 10110



086-688-8081



IMAGE HOLIDAY



IMAGE HOLIDAY



LUXURY CLASS TRAVEL AGENT

มาตรฐานระดับทัวร์ 5 ดาว จากกรมการท่องเที่ยว

การันตีคุณภาพด้วยรางวัล SME ดีเด่น จาก 3.1 ล้านผู้ประกอบการ



DAY1

BANGKOK – PHETCHABURI – PHRA NAKHON KHIRI – OLD TOWN PHETCHABURI – WAT YAI SUWANNARAM

PHRA NAKHON KHIRI

This morning, begin your day with a visit to Phra Nakhon Khiri

SET ON A HILLTOP IN PHETCHABURI, THIS PALACE BUILT BY KING RAMA IV BLENDS THAI, CHINESE, AND WESTERN STYLES WITH GRACEFUL HARMONY. ONCE A ROYAL RETREAT, IT NOW OFFERS STUNNING PANORAMIC VIEWS OF RICE FIELDS, THE OLD TOWN, AND THE DISTANT SEA.



DAY1

BANGKOK – PHETCHABURI – PHRA NAKHON KHIRI – OLD TOWN PHETCHABURI – WAT YAI SUWANNARAM



OLD STREET

THE RIVERSIDE MARKET ALLEY COMMUNITY IN PHETCHABURI

THIS CHARMING SPOT IS HOME TO A COLLECTION OF TRENDY STREET ART, LOCATED ALONG PHANIT CHAROEN ROAD IN THA RAP SUBDISTRICT, MUEANG DISTRICT, PHETCHABURI PROVINCE. THE AREA IS PART OF AN OLD COMMUNITY MADE UP OF TRADITIONAL SHOPHOUSES THAT HAVE BEEN IN BUSINESS FOR DECADES.

DAY1

BANGKOK – PHETCHABURI – PHRA NAKHON KHIRI – OLD TOWN PHETCHABURI – WAT YAI SUWANNARAM



Enjoy a delicious lunch at

KRUA BANG TABUN (UNCLE YA)

or similar

DAY1

BANGKOK – PHETCHABURI – PHRA NAKHON KHIRI – OLD TOWN PHETCHABURI – WAT YAI SUWANNARAM



WAT YAI SUWANNARAM

THIS HISTORIC PHETCHABURI TEMPLE DATES BACK TO THE AYUTTHAYA PERIOD AND WAS RESTORED UNDER KING PRASAT THONG. ITS HIGHLIGHT IS THE ANCIENT WOODEN ORDINATION HALL BELIEVED TO HAVE BEEN RELOCATED FROM CHANTHARAKASEM PALACE HOUSING A GRACEFUL SUKHOTHAI-STYLE BUDDHA IMAGE. ANOTHER REMARKABLE FEATURE IS ITS OVER 300-YEAR-OLD MURAL PAINTINGS, INTRICATELY DEPICTING THE BUDDHA'S LIFE AND JATAKA TALES.

DAY1

BANGKOK – PHETCHABURI – PHRA NAKHON KHIRI – OLD TOWN PHETCHABURI – WAT YAI SUWANNARAM



Enjoy a delicious seafood dinner at

RABIENG RIMNAM

or similar

DAY1

BANGKOK - CHONBURI - SEA TURTLE CONSERVATION CENTER, ROYAL THAI NAVY, SATTAHIP - SATTAHIP BEACH



Accommodation

**RADISSON RESORT
& SPA, HUA HIN**

or similar

DAY2

BAN BANG TABUN (BOAT TRIP) - BAN PUN PALACE.

BOAT TRIP

THE HISTORIC RIVERSIDE COMMUNITY OF PHETCHABURI

BEGIN YOUR MORNING AT BAN BANG TABOON, A HISTORIC RIVERSIDE COMMUNITY KNOWN FOR ITS TRADITIONAL FISHING CULTURE. TAKE A BOAT RIDE THROUGH LUSH MANGROVES, SPOTTING BIRDS AND FRUIT BATS—AND FROM NOVEMBER TO FEBRUARY, YOU MAY EVEN SEE IRRAWADDY DOLPHINS.



DAY2

BAN BANG TABUN (BOAT TRIP) - BAN PUN PALACE.



Enjoy a delicious seafood lunch at

**BAAN RIM NAM
RESTAURANT**

or similar

DAY2

BAN BANG TABUN (BOAT TRIP) - BAN PUN PALACE.

WANG BAN PUEN

“BAN PUEN ROYAL PALACE”

BUILT DURING KING RAMA V'S REIGN, THIS EUROPEAN-STYLE PALACE FEATURES A GRAND STAIRCASE HALL AND TALL ARCHED WINDOWS, UNLIKE TRADITIONAL THAI PALACES. ITS GROUNDS INCLUDE ELEGANT GARDENS AND BRONZE CANNONS ARRANGED AROUND THE THRONE HALL.



DAY2

BAN BANG TABUN (BOAT TRIP) - BAN PUN PALACE.



Enjoy a delicious seafood dinner at

KRUA PA CHALIAO

or similar

DAY2

BAN BANG TABUN (BOAT TRIP) - BAN PUN PALACE.



Accommodation

**RADISSON RESORT
& SPA, HUA HIN**

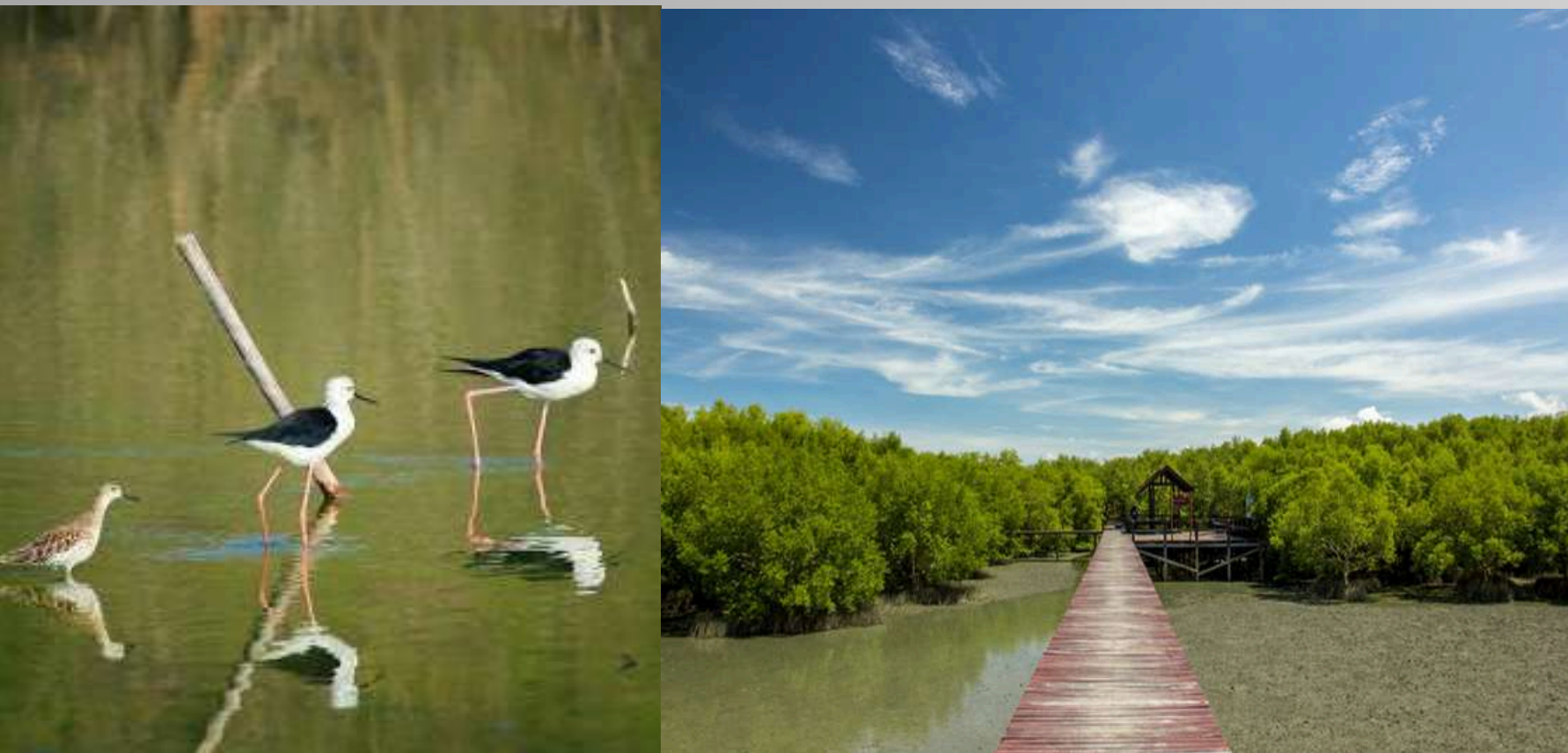
or similar

DAY3

ROYAL INITIATIVE PROJECT AT LAEM PHAK BIA - CHA-AM BEACH

LAEM PHAK BIA ROYAL INITIATIVE PROJECT

BEGIN YOUR DAY AT THE LAEM PHAK BIA ROYAL INITIATIVE PROJECT, WALKING ALONG A NATURE TRAIL THROUGH THRIVING MANGROVES. SPOT MONITOR LIZARDS AND A VARIETY OF NATIVE BIRDS, AND DURING THE MIGRATION SEASON (NOVEMBER FEBRUARY), LOOK OUT FOR RARE WATERBIRDS AND SHOREBIRDS FROM SIBERIA AN UNFORGETTABLE SIGHT FOR NATURE LOVERS.



DAY3

ROYAL INITIATIVE PROJECT AT LAEM PHAK BIA - CHA-AM BEACH



Enjoy a delicious seafood lunch at

BAN PU PEN 2

or similar

DAY3

ROYAL INITIATIVE PROJECT AT LAEM PHAK BIA - CHA-AM BEACH

CHA-AM BEACHES

In the afternoon, unwind at Cha-Am Beach, Phetchaburi's most popular seaside destination. Stretching over 6 kilometers, the beach offers a calm, natural atmosphere perfect for any getaway. Enjoy activities like horseback riding, cycling with ocean views, fresh seafood by the shore, or simply relaxing to the sound of the waves. The central and southern areas are lively with restaurants, activities, and deck chairs—ideal for families and friends seeking both fun and relaxation.



DAY3

ROYAL INITIATIVE PROJECT AT LAEM PHAK BIA - CHA-AM BEACH



Enjoy a delicious dinner at

KRUA KIANG KLUEN

or similar

DAY3

ROYAL INITIATIVE PROJECT AT LAEM PHAK BIA - CHA-AM BEACH



Accommodation

**RADISSON RESORT
& SPA, HUA HIN**

or similar

DAY4

HUA HIN RAILWAY STATION - HUA HIN ZOO



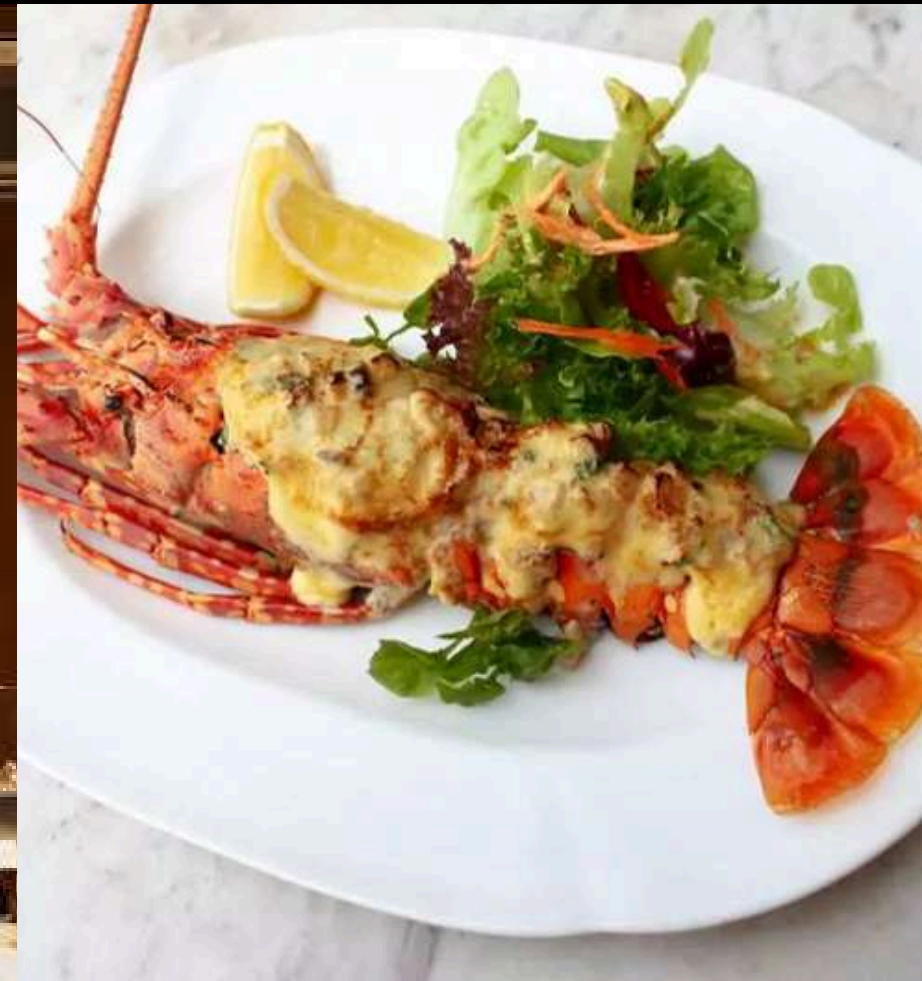
HUA HIN RAILWAYSTATION

Begin your morning at Hua Hin Railway Station, one of Thailand's most beautiful and historic stations, built during King Rama VI's reign. Inspired by the Phra Thinang Moonsamphanaratchuthit pavilion, it showcases classic Thai architecture with its iconic red-and-cream design. Once a royal waiting room, it is now a beloved landmark and popular photo spot for visitors.



DAY4

HUA HIN RAILWAY STATION - HUA HIN ZOO



Enjoy a delicious lunch at

RAILWAY RESTAURANT

or similar

DAY4

HUA HIN RAILWAY STATION - HUA HIN ZOO

HUA HIN SAFARI ADVENTURE PARK

IN THE AFTERNOON, VISIT HUA HIN SAFARI & ADVENTURE PARK, A ZOO AND AMUSEMENT PARK OFFERING AN ADVENTUROUS AND EDUCATIONAL EXPERIENCE. IT FEATURES A VARIETY OF ANIMALS, INCLUDING WILDLIFE, DOMESTIC ANIMALS, AND RARE EXOTIC SPECIES. THIS DESTINATION IS SUITABLE FOR VISITORS OF ALL AGES.



DAY4

HUA HIN RAILWAY STATION - HUA HIN ZOO



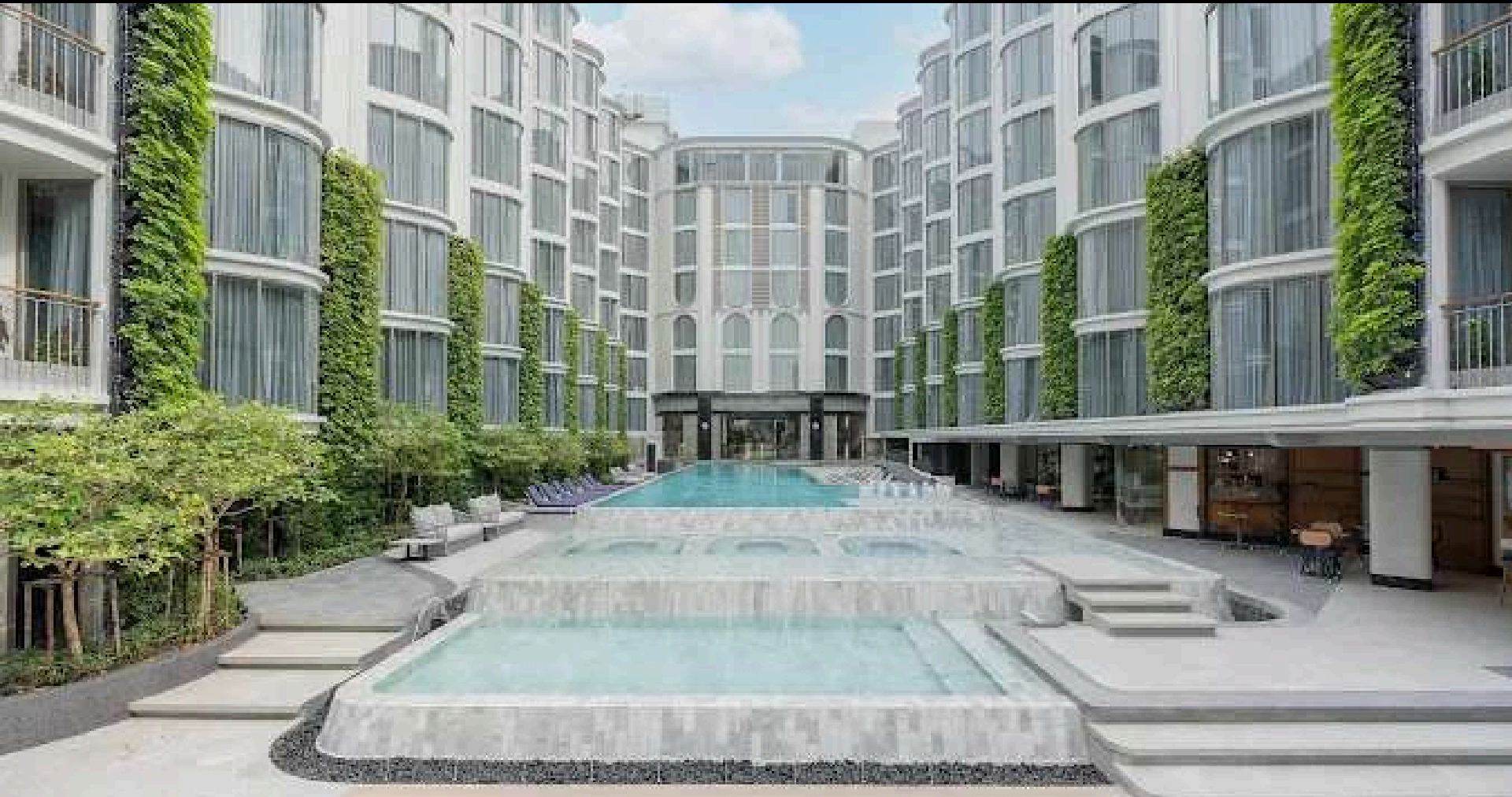
Enjoy a delicious dinner at

SALA RATTANAKOSIN EATERY & BAR

or similar

DAY4

HUA HIN RAILWAY STATION - HUA HIN ZOO



Accommodation

THE SALIL HOTEL RIVERSIDE

or similar

DAY5

JURASSIC WORLD - ICONSIAM

JURASSIC WORLD



EXPERIENCE JURASSIC WORLD: THE EXHIBITION, AN IMMERSIVE JOURNEY INTO A PREHISTORIC WORLD FILLED WITH LIFE-SIZED DINOSAURS. ADVANCED EFFECTS AND ANIMATRONICS MAKE THE T-REX AND OTHER SPECIES FEEL INCREDIBLY REAL DELIVERING A THRILLING, UNFORGETTABLE ADVENTURE.

DAY5

JURASSIC WORLD - ICONSIAM



Enjoy a delicious lunch at

THE SIAM TEA ROOM

or similar

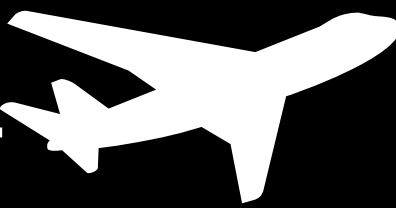
DAY5

JURASSIC WORLD - ICONSIAM

ICON SIAM

ENJOY INDEPENDENT SHOPPING AT ICONSIAM, THE PREMIER RIVERSIDE LANDMARK ALONG THE CHAO PHRAYA RIVER. THIS DESTINATION SEAMLESSLY INTEGRATES LUXURY, ART AND CULTURE, AND ADVANCED INNOVATION IN ONE LOCATION. RENOWNED AS “THE MOTHER OF ALL MALLS,” IT IS A WORLD-CLASS SHOPPING COMPLEX CONSIDERED THE HEART OF BANGKOK.





Afterward, the tourists will be transferred to the airport for their departure, leaving with lasting memories and a truly unforgettable experience.

SERVICE RATES FOR 4 TRAVELERS

TRAVELER TYPE	PRICE
Adult (per head, 2 persons per room)	
Child over 12 years old sharing a room with 1 adult	
Child under 12 years old sharing a room with 2 adults (with extra bed)	
Child under 12 years old sharing a room with 2 adults (no extra bed)	
Single supplement	10,900.-

ติดต่อฝ่ายขาย / 086-688-8081 / 02-661-8081

